



## TURBO-LUX® 2

Fire pump flowmeter - Wafer version for flow measurement in stationary sprinkler systems



made  
in  
Germany

The Turbo-Lux® 2 fire pump flowmeter offers you proven technology in a wafer version. Enjoy minimal installation effort and exceptional measurement accuracy – all at reduced acquisition costs compared to its predecessor.

The Turbo-Lux® 2 is specifically designed for use in fixed water fire extinguishing systems and is VdS approved. With its flexible installation orientation and flow direction, the device perfectly adapts to your requirements.

Use the orifice flowmeter for all installed orifice plates ranging from DN 80 ... DN 250, with measurement ranges of 420 ... 18 000 l/min (111 ... 4 755 USgpm).

### ADVANTAGES

- » One bypass flowmeter for all orifice plates DN 80 ... DN 250
- » Installation location, orientation and flow direction freely selectable
- » Easy installation and removal
- » Strong vibration resistance
- » Optionally available with calibration certificate

It is easy to install and remove.

The advantages of the Turbo-Lux® 2 include its long service life, strong vibration resistance and excellent reading accuracy.

Enhance your device with an optional centering kit for simplified installation or a calibration certificate to get even more out of your Turbo-Lux® 2.



## TECHNICAL DATA

### System

Measuring principle	Orifice plate as differential pressure generator with variable area bypass flowmeter
---------------------	--

Measuring accuracy	±2.5 % of full scale value (VdS)
--------------------	----------------------------------

Certificates	VdS G 4060003
--------------	---------------

### Input

Nominal diameter	DN 80, PN 16
------------------	--------------

DN 100, PN 16
---------------

DN 150, PN 16
---------------

DN 200, PN 10/16
------------------

DN 250, PN 10/16
------------------

Pressure limits	Max. 16 bar (232 psi)
-----------------	-----------------------

### Application conditions

Temperature	4 °C ... 50 °C (39 ... 122 °F)
-------------	--------------------------------

Medium	Water
--------	-------

### Constructive design

Orifice plate	Aluminium
---------------	-----------

Differential pressure tube	Brass
----------------------------	-------

Float	Stainless steel
-------	-----------------

Bypass orifice	Stainless steel
----------------	-----------------

Filter	Stainless steel
--------	-----------------

Gasket	NBR
--------	-----

## DIMENSIONS AND WEIGHTS

Nominal diameter	A (mm / in)	ØD (mm / in)	Packaging dimensions (mm / in)	Weight incl. packaging (kg / lbs)
DN 80, PN 16	130 / 5.1	138 / 5.4	285 x 215 x 57 (11.2 x 8.5 x 2.4)	1.3 / 2.9
DN 100, PN 16	140 / 5.5	158 / 6.2	285 x 215 x 57 (11.2 x 8.5 x 2.4)	1.6 / 3.5
DN 150, PN 16	165 / 6.5	212 / 8.4	285 x 215 x 57 (11.2 x 8.5 x 2.4)	2.1 / 4.6
DN 200, PN 10/16	190 / 7.5	268 / 10.6	385 x 325 x 57 (15.2 x 12.8 x 2.4)	3.0 / 6.6
DN 250, PN 10/16	215 / 8.5	320 / 12.6	385 x 325 x 57 (15.2 x 12.8 x 2.4)	4.0 / 8.8
Bypass flowmeter	-	-	220 x 160 x 110 (8.7 x 6.3 x 4.3)	0.7 / 1.5

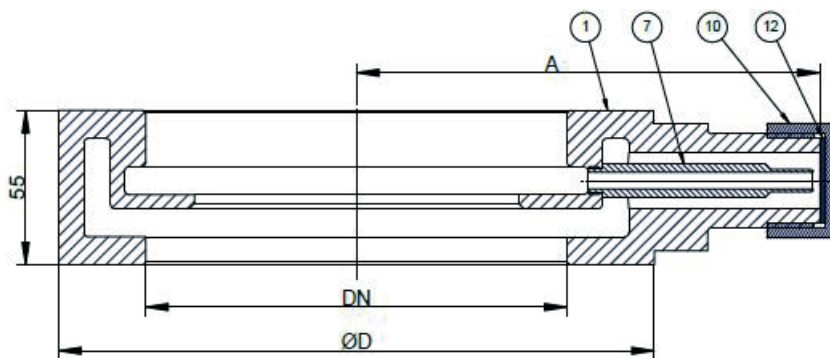


Fig. 1: Position drawing orifice plate

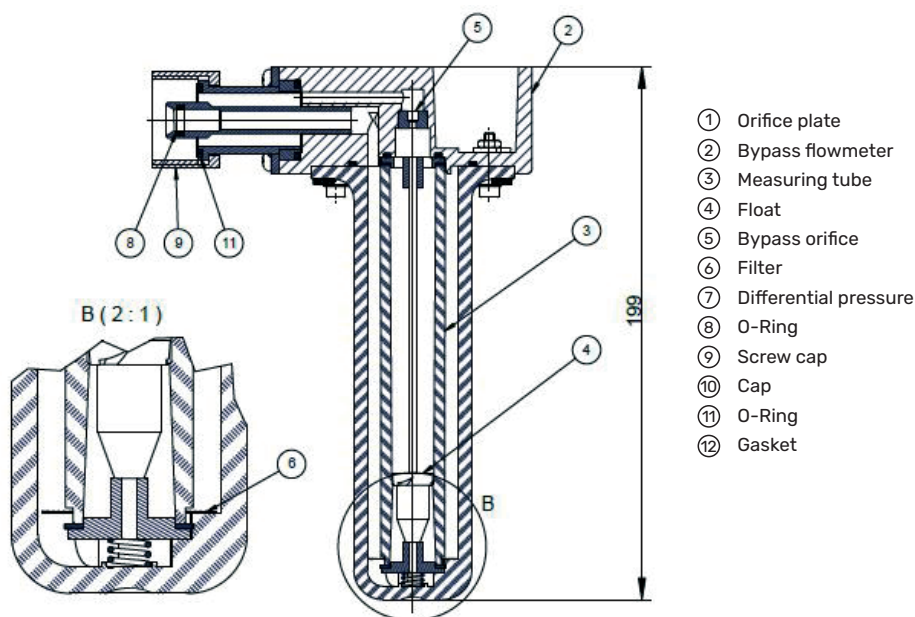


Fig. 2: Position drawing bypass orifice

## PRODUCT AND ACCESSORIES

Order code	Description
7ME5834-0AB00-0AA0	Bypass flowmeter Turbo-Lux® 2
7ME5834-0AB00-1AA0	Bypass flowmeter Turbo-Lux® 2 with accuracy certificate
7ME5830-Adapter-M30-G1	Adapter M30 x 1.5 to G1 <sup>1</sup>
7ME5834-0AA10-0AA0	Transport case
7ME5834-0AA01-0AA0	Replacement cap incl. gasket

<sup>1</sup>For connecting a Turbo-Lux® bypass flowmeter to a grooved Turbo-Lux® 3 orifice plate

## ORIFICE PLATES AND ACCESSORIES

Order code	Description	Connection / Measurement range
7ME5834-1AA00-0AA0	Orifice plate <sup>2</sup>	DN 80, PN 16 Qv: 0.42 - 2.1 m <sup>3</sup> /min
7ME5834-2AA00-0AA0	Orifice plate <sup>2</sup>	DN 100, PN 16 Qv: 0.6 - 3.0 m <sup>3</sup> /min
7ME5834-3AA00-0AA0	Orifice plate <sup>2</sup>	DN 150, PN 16 Qv: 1.2 - 6.0 m <sup>3</sup> /min
7ME5834-4AA00-0AA0	Orifice plate <sup>2</sup>	DN 200, PN 10/16 Qv: 2.4 - 12.0 m <sup>3</sup> /min
7ME5834-5AA00-0AA0	Orifice plate <sup>2</sup>	DN 250, PN 10/16 Qv: 3.6 - 18.0 m <sup>3</sup> /min
7ME5834-0BA00-0AA0	Centering kit orifice plate <sup>2</sup>	DN 80, PN 16
7ME5834-0CA00-0AA0	Centering kit orifice plate <sup>2</sup>	DN 100, PN 16
7ME5834-0EA00-0AA0	Centering kit orifice plate <sup>2</sup>	DN 150, PN 16
7ME5834-0FA00-0AA0	Centering kit orifice plate <sup>2</sup>	DN 200, PN 10
7ME5834-0KA00-0AA0	Centering kit orifice plate <sup>2</sup>	DN 200, PN 16
7ME5834-0GA00-0AA0	Centering kit orifice plate <sup>2</sup>	DN 250, PN 10/16

<sup>2</sup>For installation between flanges

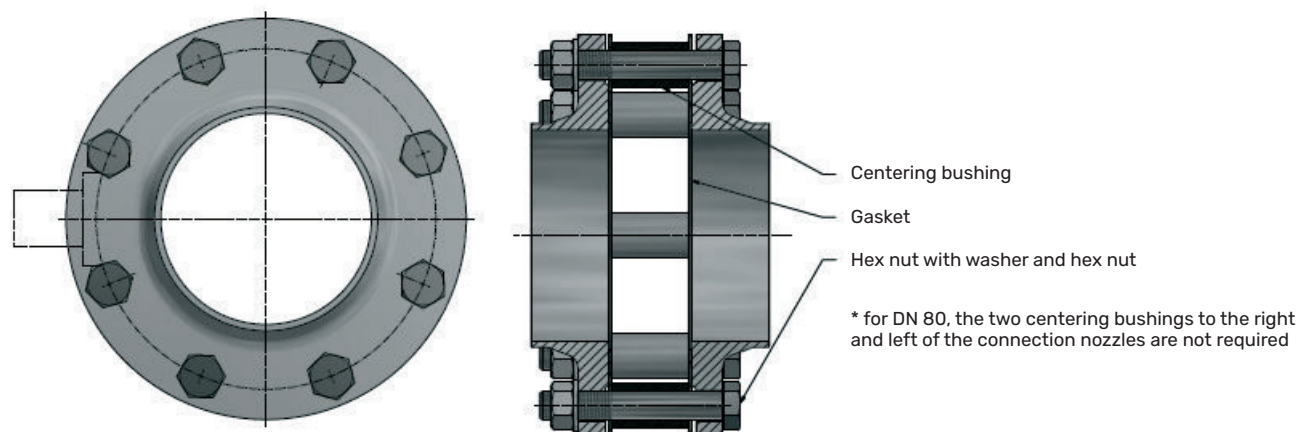


Fig. 3: Centering kit for wafer version